

**December 1, 2018**

**(b) (7)(E) AOR/ (b) (7)(E)**

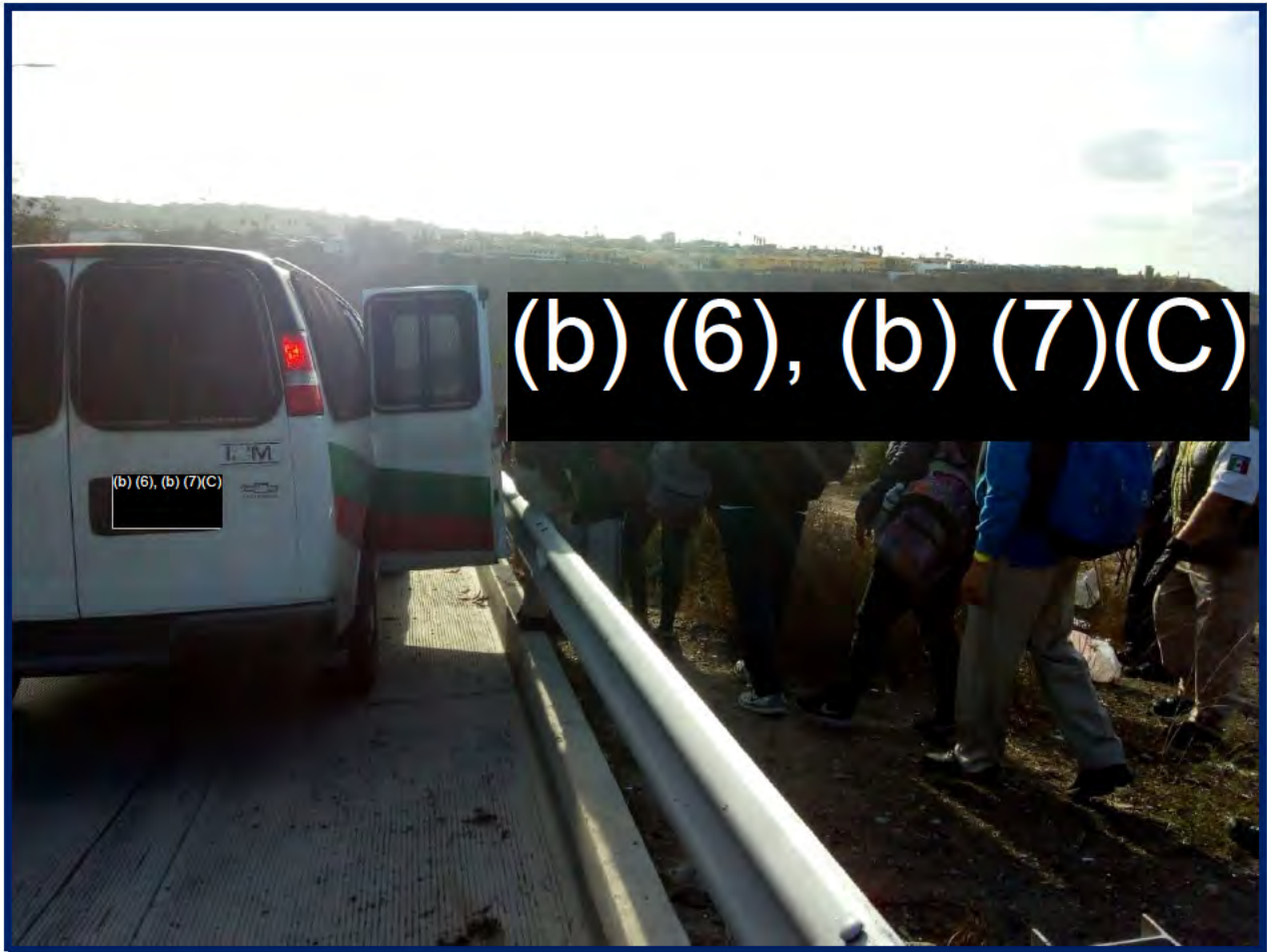
On December 1, 2018, at approximately 2:15 PM **(b) (7)(E)** observed several groups totaling approximately 20-40 people. The group was staged south of **(b) (7)(E)** shortly after, 22 individuals crossed the primary border fence, but were stuck between the primary and C-Wire. **(b) (7)(E)** was contacted and responded to the area, GoM was also contacted, and both arrived to the area at approximately 2:30 PM.

**(b) (7)(E)** convinced the 22 individuals made up of 10 males, 4 females and 8 children to return to Mexico via the hole under the fence. Because of their placement (between the primary and C-Wire) this was the safest alternative. This took approximately 2 and a half hours of talking and coordinating, once they finally returned to Mexico. **Once arriving GoM detained 10 migrants south of (b) (7)(E) GoM also transported the 4 females and 8 children away from the border area, the total detentions being 22.**

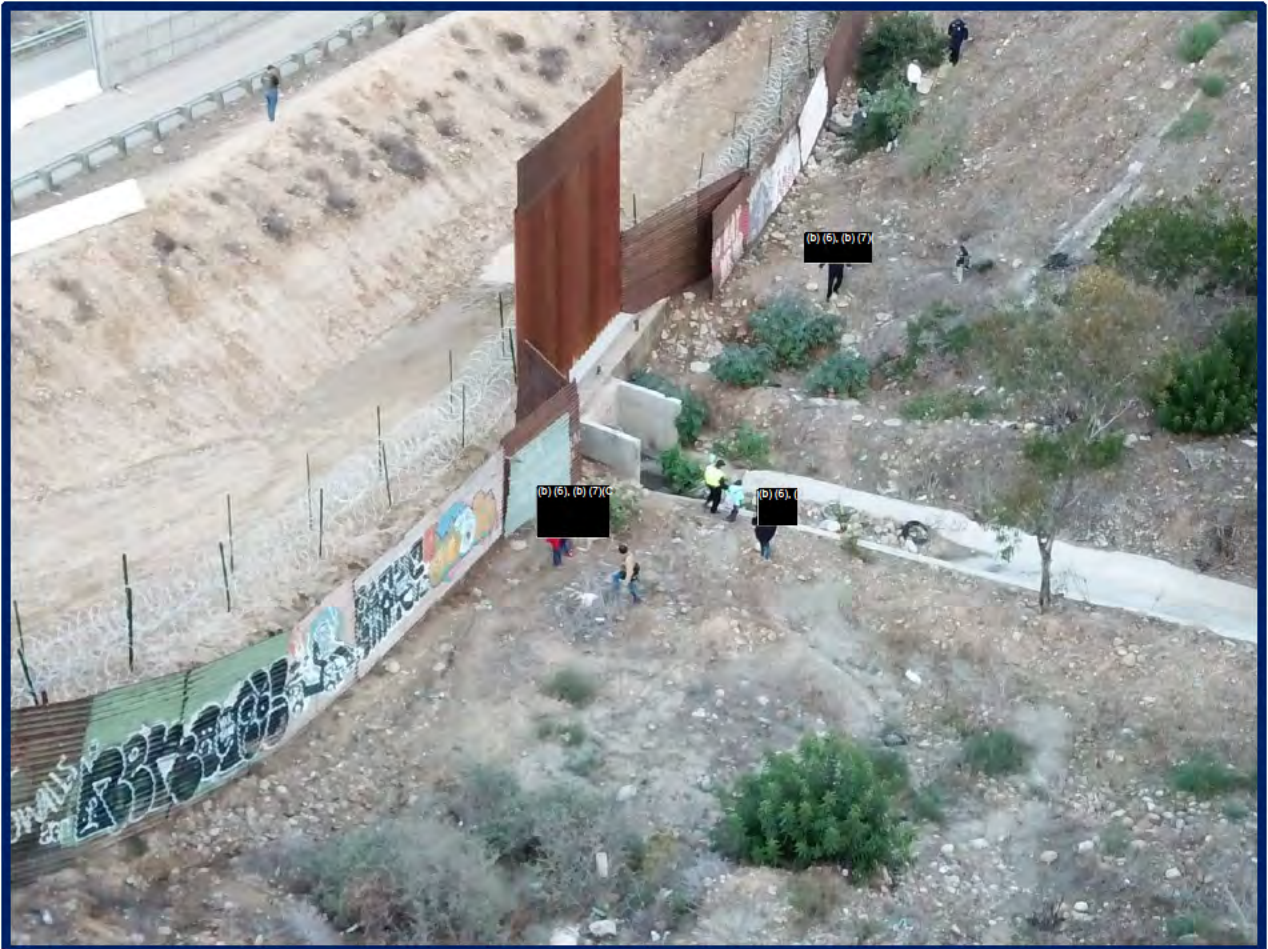
*It should be noted that there was media present during the entire evolution.*

**GOM Initial Apprehensions**

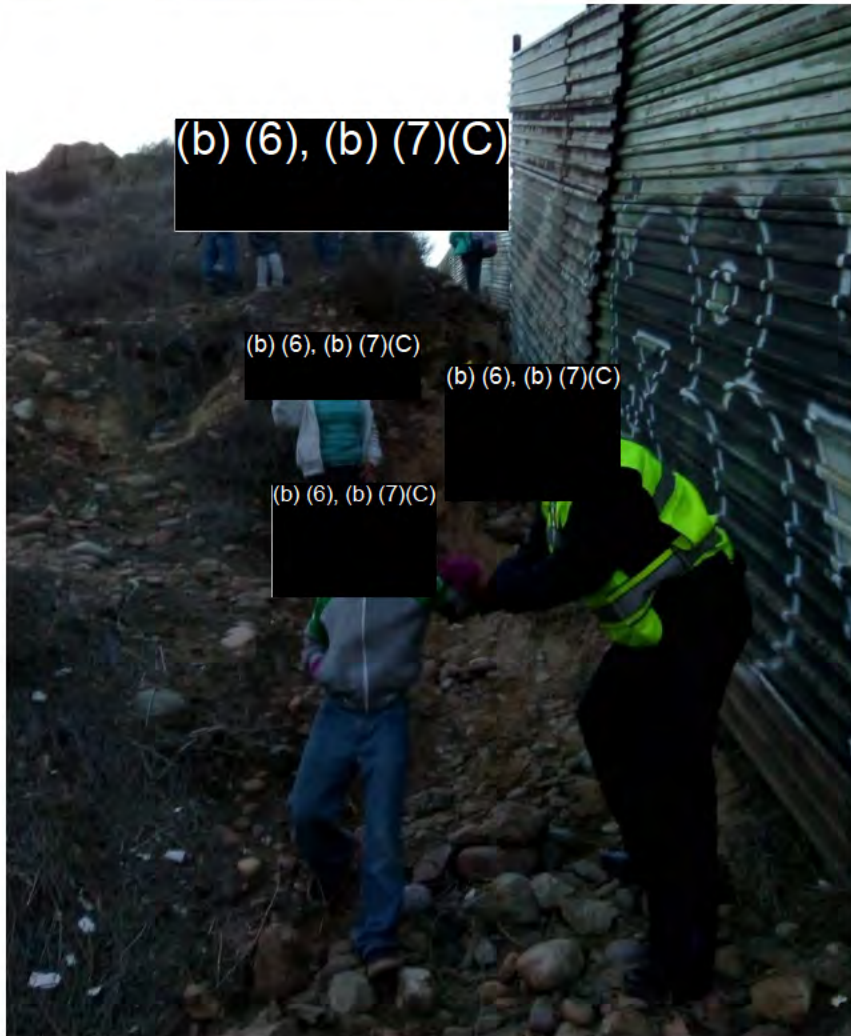




**GOM Second Apprehensions**





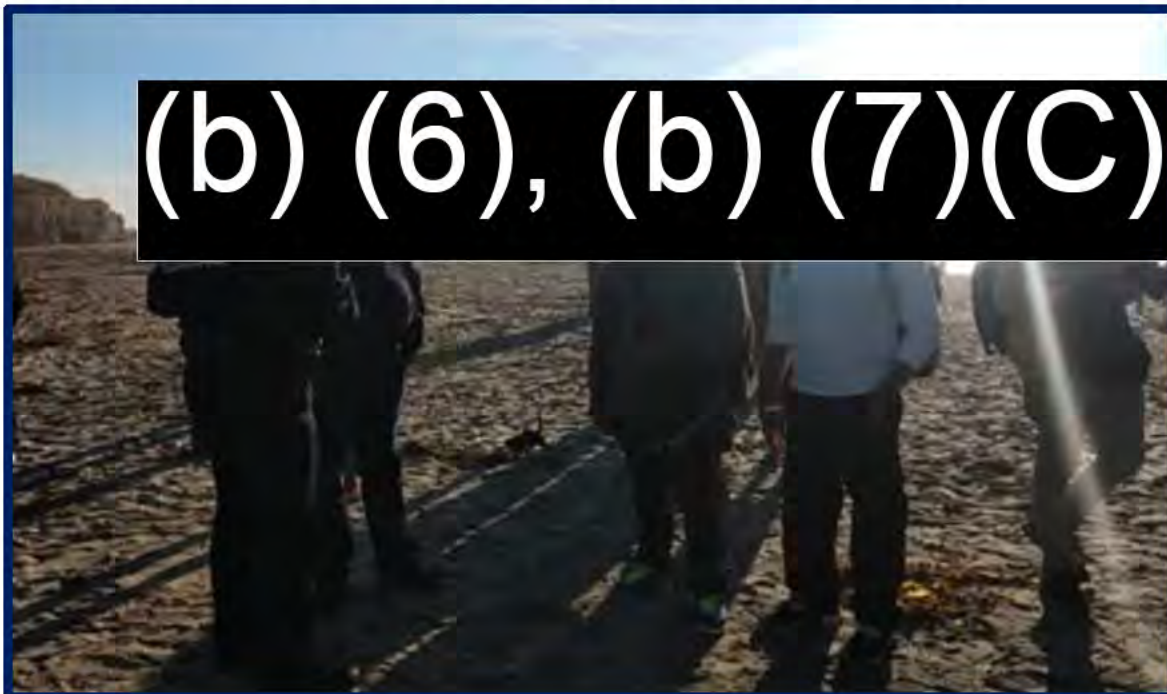


**December 2, 2018**

**(b) (7)(E) AOR (b) (7)(E)**

At approximately 3:00 PM, (b) (7)(E) received a request call from (b) (7)(E) Station personnel, to assist at (b) (7)(E) where a crowd of over 20 people had gathered and were attempting to climb over the primary Border fence. The individuals were also hindering/preventing fence crew from repairing the Border fence. (b) (7)(E) contacted GoM and they assisted, deescalating the situation and dispersing the crowd. The fence crew workers were able to conduct repairs of the concertina wire and Border fence.

**It should be noted that there was media present during the entire evolution.**



December 2, 2018

(b) (7)(E) AOR/ (b) (7)(E)

At approximately 4:00 PM, (b) (7)(E) agents responded to (b) (7)(E) where two subjects went over the (primary) Border fence and continued northbound. One subject climbed over the secondary fence and was arrested by (b) (7)(E) Station agents, while another the other subject stopped between the fences. (b) (7)(E) agents interviewed that second subject and determined that both were Honduran citizens and part of the Caravan, from the recently closed Benito Juarez shelter.

(b) (7)(E) agents remained in the area and assisted (b) (7)(E) Station agents in (b) (7)(E) (b) (7)(E) where a group of over 20 individuals (male, female, minors) remained on the south side of the primary border fence. **8-10 personnel from the media were also on site intermingled with the group, capturing images and documenting the event. GoM was unable to respond to the area.**

